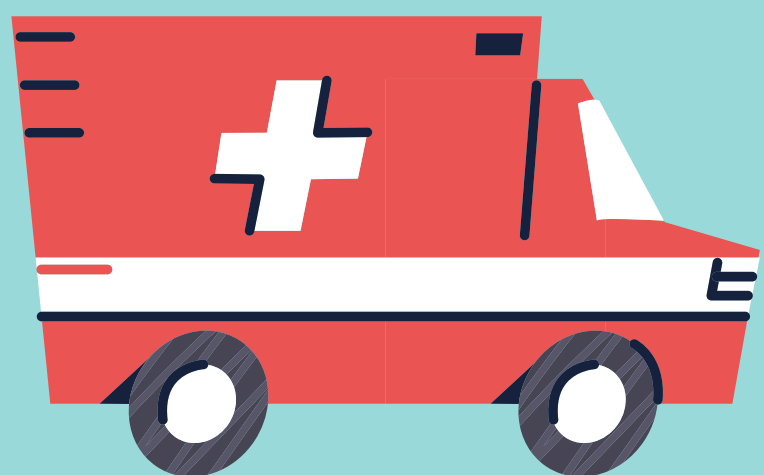
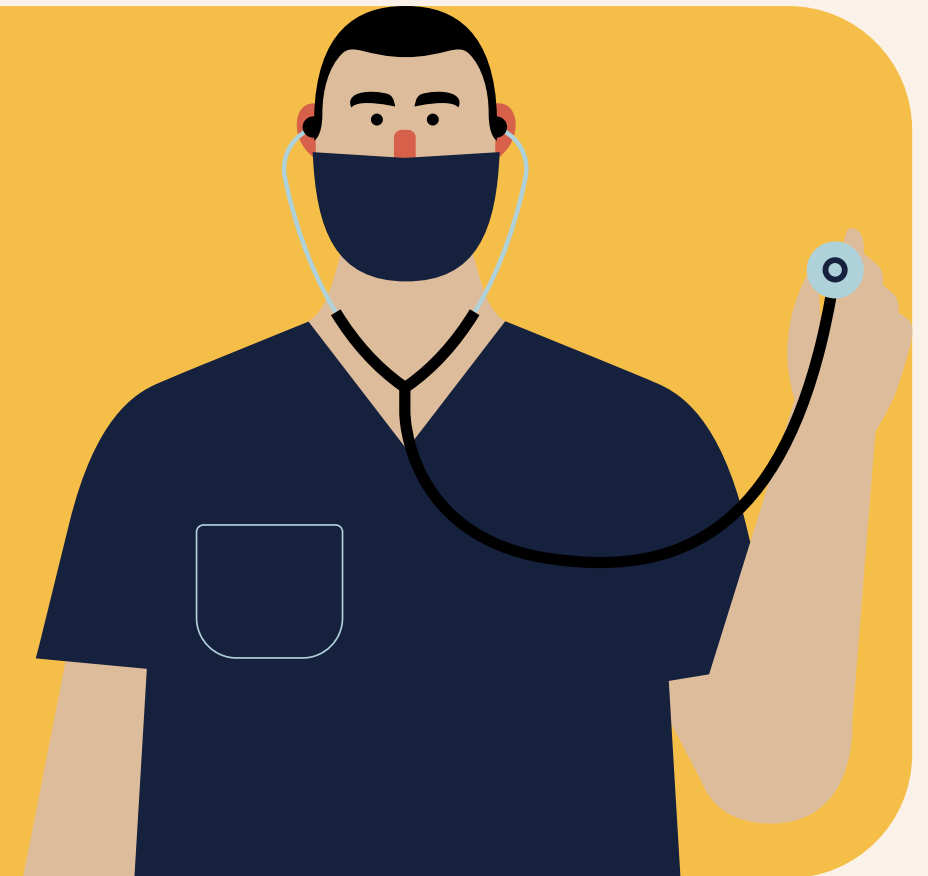


**SIMULATION OF EPINEPHRINE ADMINISTRATION AFTER  
PAEDIATRIC OUT-OF-HOSPITAL CARDIAC ARREST (POHCA)**

# Participate in a Research Study

Guidelines recommend epinephrine should be administered within the first five minutes on scene. Currently, only intravenous (IV) and intraosseous (IO) routes are used for POHCA, and these can take time. Our goal is to see how long it takes to administer epinephrine through IV, IO, and intramuscular (IM) routes.



**We are looking for Advanced Care  
and Critical Care Paramedics to  
participate.**

**You will be randomly  
assigned to an epinephrine  
delivery route (IV, IO, IM,  
or autoinjector).**

**The simulation will take  
approximately 1 hour. Your  
time in the simulation will  
be eligible for CME points.**



**Where: Middlesex-London Paramedic  
Service's Training Facility**



**When: Middlesex-London Paramedic Service's  
Training Day (additional dates as needed)**

**For more information, please contact:**

**the Research Coordinator, Saoirse Cameron (519-685-8500 pager 18528),  
the Superintendent of Education for MLPS, Jay Loosley (519-679-5466 ext.  
1103) or the Investigator, Dr. Janice Tijssen (519-685-8500 ext. 58052).**