

Spring/Summer 2024

Islet Cell News

CHILDREN'S HOSPITAL PAEDIATRIC DIABETES TEAM



A few members of the diabetes & endocrinology team enjoying the solar eclipse.
From left: Shannon, Lori, Brian, Denise, Marnie & Kristen.

INSIDE THIS MONTH'S ISSUE:

Upcoming Events

Quick Tips

University/College Planner

Colouring Page

Carb counted summer treats

- Sm/Reg Oreo McFlurry - 53g/89g
 - Jr/Classic Wendy's Frosty 30g/48g
 - Mini DQ Blizzard 60g
 - PC Berries Skyr Yogurt Bars 14g
 - Ice cream sandwiches, various brands. 30g
 - Jumbo freezies 18g
-



Upcoming Events

JDRF Walk to Cure Diabetes

Sunday, June 2, 2024 - London, Greenway Park

Sunday, June 9, 2024 - Chatham & Waterloo

Sunday, June 23, 2024 - Brantford & Windsor

[For more information visit JDRF](#)

Diabetes Camps

Camp Discovery, Dorchester

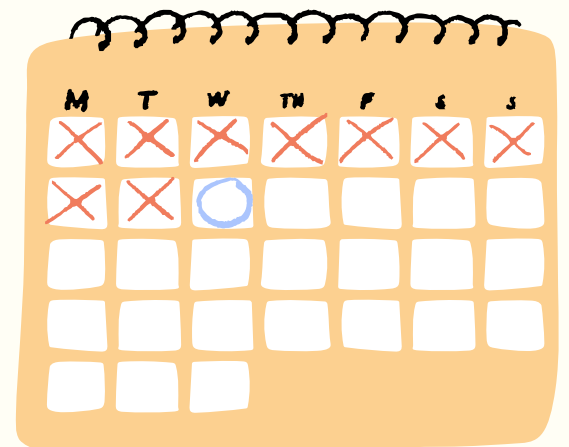
Ages 7-12

August 11-16, 2024

Camp Huronda, Huntsville

Ages 7-15

July 30 - August 24, 2024

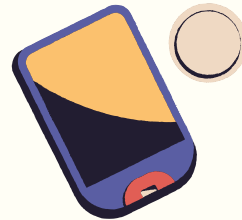


[For more information visit D-Camps](#)

.....



Assistive Devices Program (ADP)

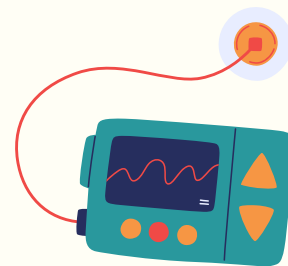


If you are receiving Dexcom supplies delivered to your home through the ADP program that you are not using please notify Dexcom at 1-844-832-1810 option 5 to let them know so they can pause delivery of your supplies.

You can resume receiving Dexcom supplies anytime within two years of starting the program. Dexcom users through the ADP program will be receiving a renewal letter for supplies every 2 years.

School Nurses 2024-25

Summer is almost here, which means we will be preparing for the 2024-25 school year. Please let us know if your child will no longer require a school nurse in September.

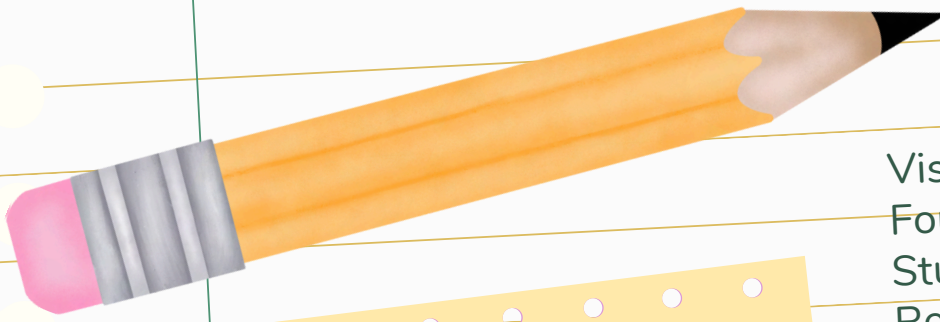


Pumped and ready to go!

Keep your charging cable somewhere easy to access and carry extra batteries with you, just in case

Always ensure that your pump has batteries or been charged for your regular daily use. This will allow for better overall management and keep the pump optimized!





Are you a student with
Type 1 Diabetes
who will be
attending
college or university?

Visit the Diabetes Hope Foundation for the free Student Transition Planner. Researched and written by students with Type 1 Diabetes the planner has everything you need to transition to campus life!

Student
Transition
Planner

iChallengeDiabetes

Spring Retreat
June 7-9, 2024
Coldwater, ON
For ages 14+



Not sure when to reach out to your diabetes team? Once a week, take a peak! Contact us if:

Look at your Dexcom Clarity or Freestyle Libre app/upload:

- Time "in range" is less than 50%
- OR Your "GMI" (estimated A1C) is more than 7.5%
- OR Lows are more than 4%



Bear with me...



...low blood sugar