

Where is all the Monitoring Equipment?



Working Together to Make **YOUR** Work-life Easier!

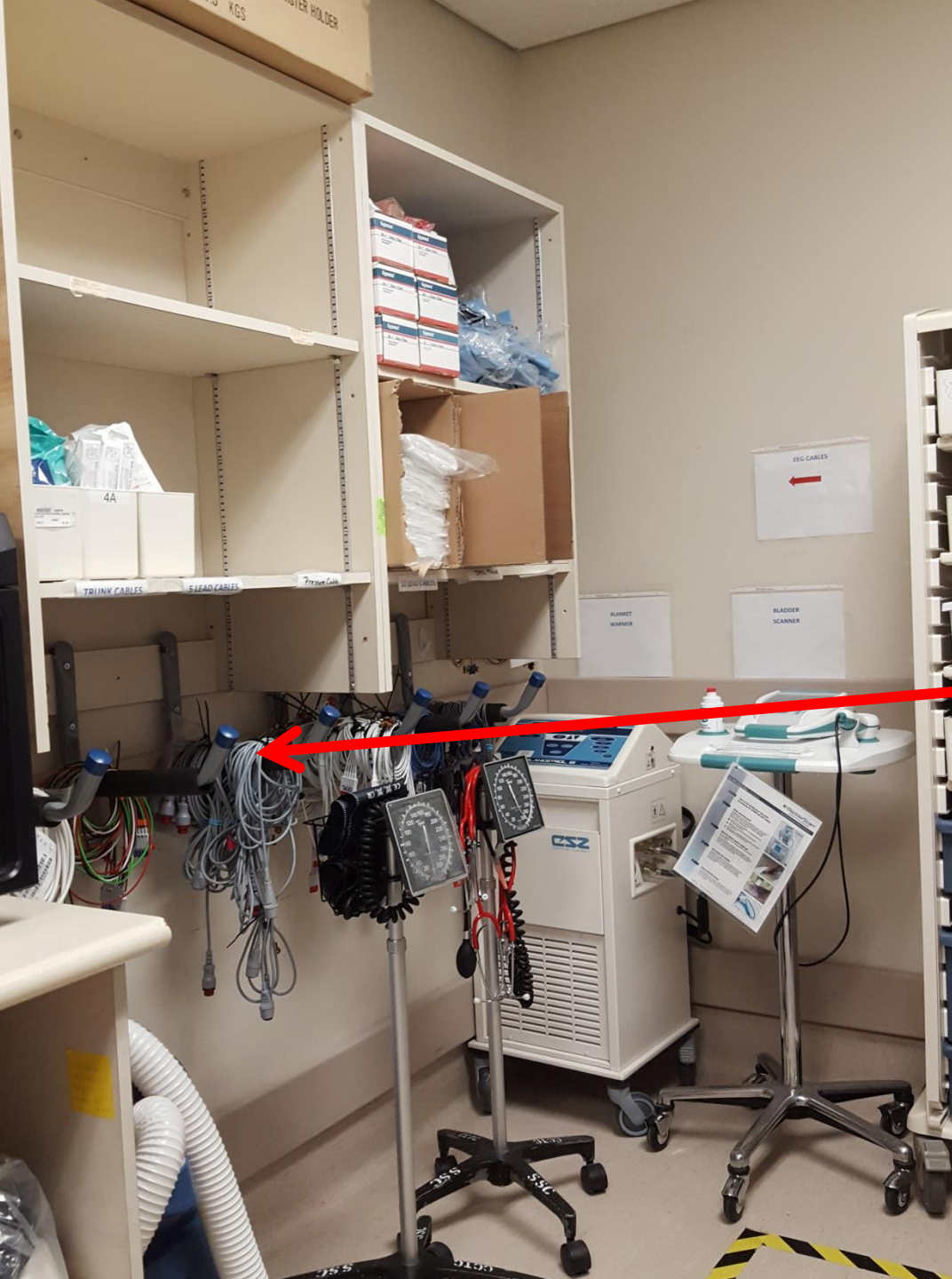
- Inability to locate supplies is a major frustration
- You will only find what you need if EVERYONE returns things to the right location

Working Together to Make **YOUR** Work-life Easier!

- *If you are too busy* to clean and/or return supplies to the correct location, *please ask someone else or leave it with the Charge Nurse*
- Please take a few minutes to review the following slides so you will know where to find things



When you walk into the Room 1 Supply Room you will find all of the monitoring equipment located in the Southwest corner of the room.



Most of the monitor cables are now organized on hooks under the shelves.

Keep Cables Sorted by Type



To the Left

TRUNK CABLES

5 LEAD CABLES

Pressure Cable

TRUNK CABLES

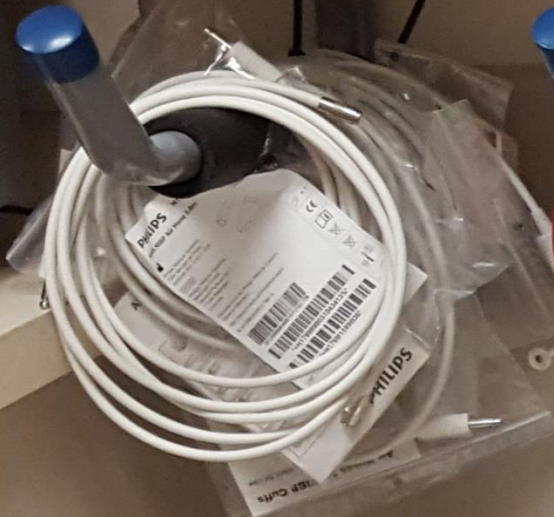
12 LEAD

12 L

**NIBP and ECG
Trunk Cables**

**5 Lead ECG
Cables**

**Pressure
Cables**



To the Right

12 LEAD CABLES

SpO2 TRUNK

12 LEAD CABLES

SpO2 PROBES

**12 Lead ECG
Cables**

**SpO2 Trunk
Cables**

**SpO2
Probes**

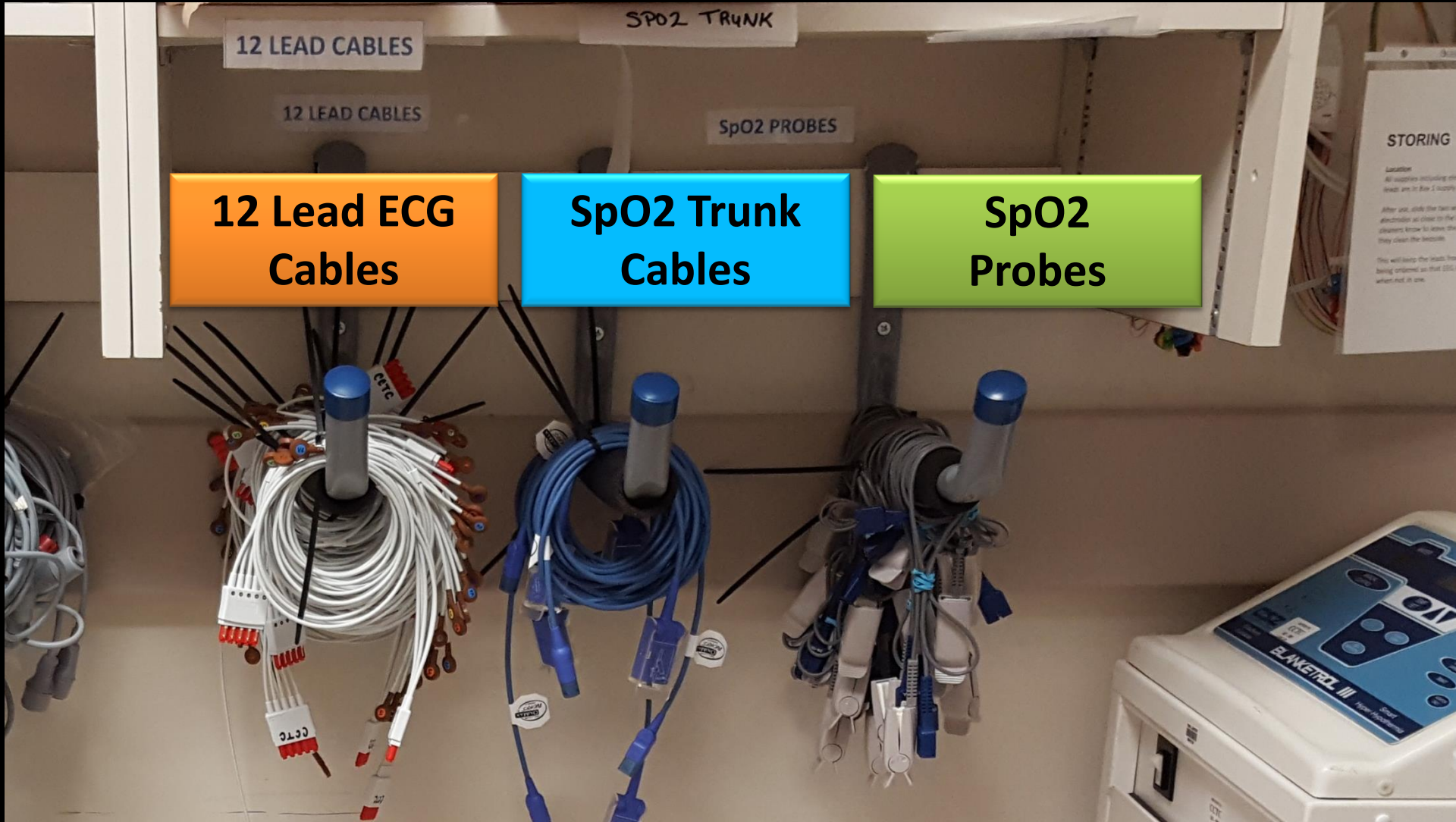
STORING

Location

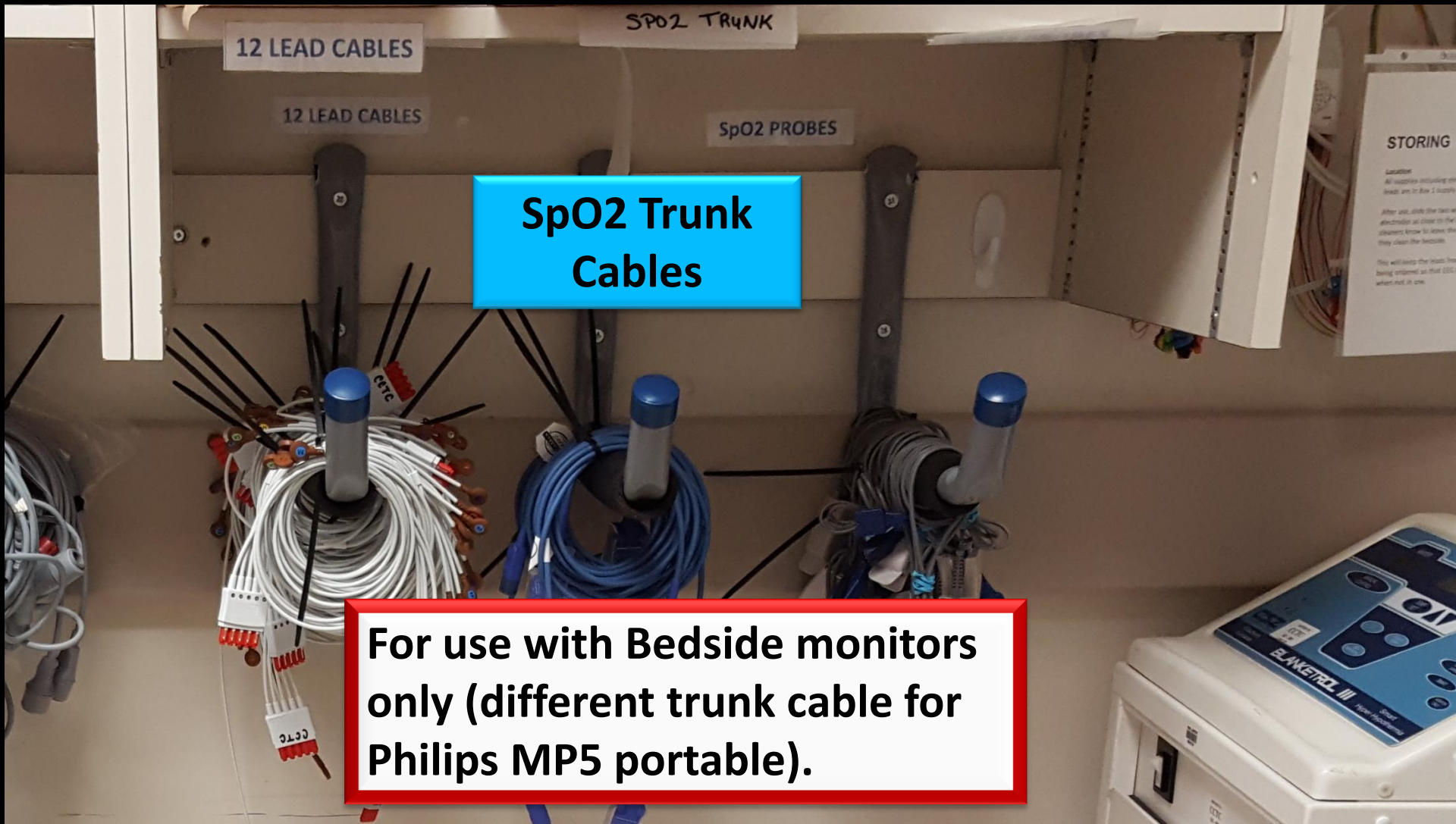
All supplies including the leads are in Box 2 (top)

After use, slide the fan on the monitor as close to the cleaners know to save the they clean the bedside.

This will keep the leads being ordered so that when not in use.



To the Right



12 LEAD CABLES

SpO2 TRUNK

12 LEAD CABLES

SpO2 PROBES

**SpO2 Trunk
Cables**

**For use with Bedside monitors
only (different trunk cable for
Philips MP5 portable).**

STORING

Location

All supplies including the leads are in Box 2 (top)

After use, slide the tray in direction as close to the cleaners, know to save they clean the leads.

This will keep the leads being ordered so that when not in use.

To the Left

TRUNK CABLES

5 LEAD CABLES

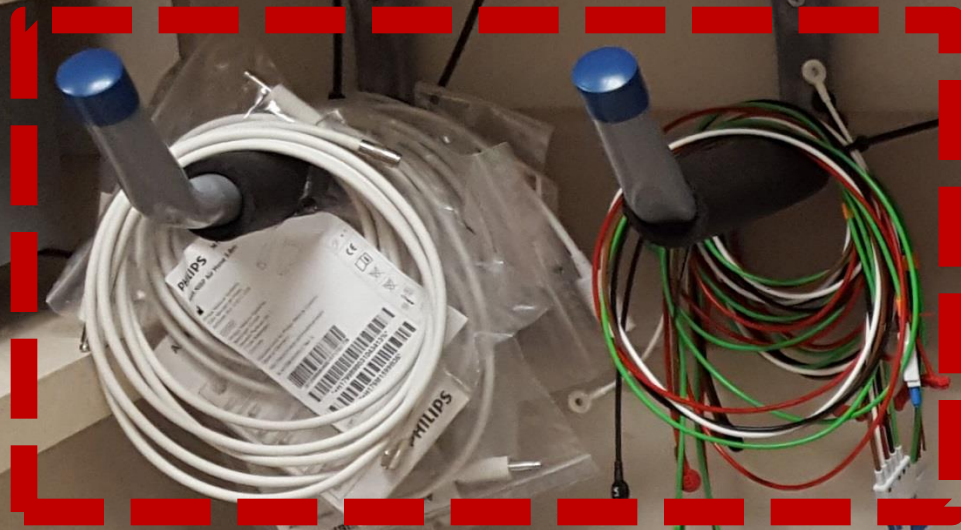
Pressure Cable

12 LEAD

TRUNK CABLES

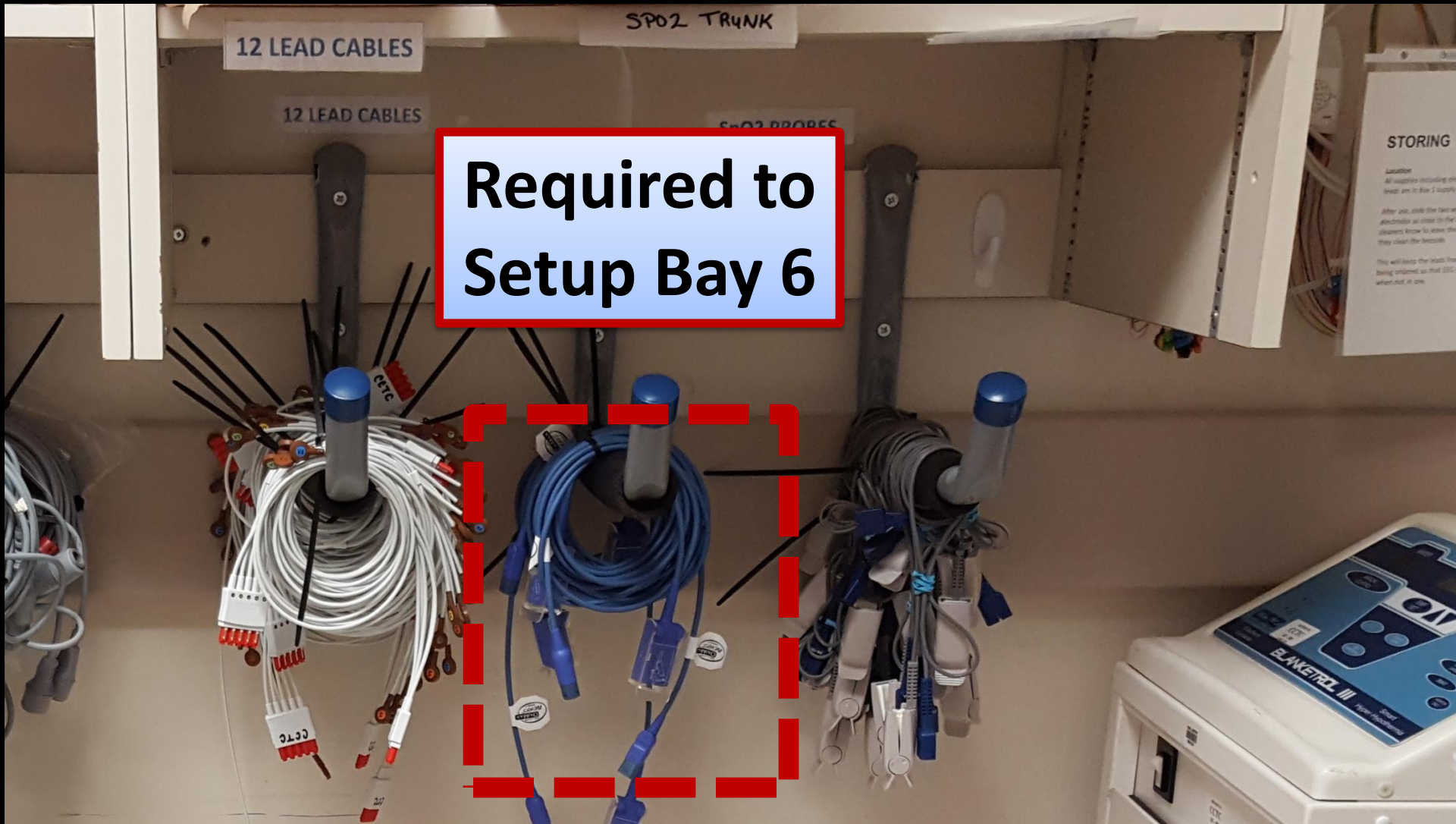
**Required to
Setup Bay 6**

12 L



CCTC

To the Right



12 LEAD CABLES

SPO2 TRUNK

12 LEAD CABLES

SPO2 PROBES

Required to
Setup Bay 6

STORING

Location

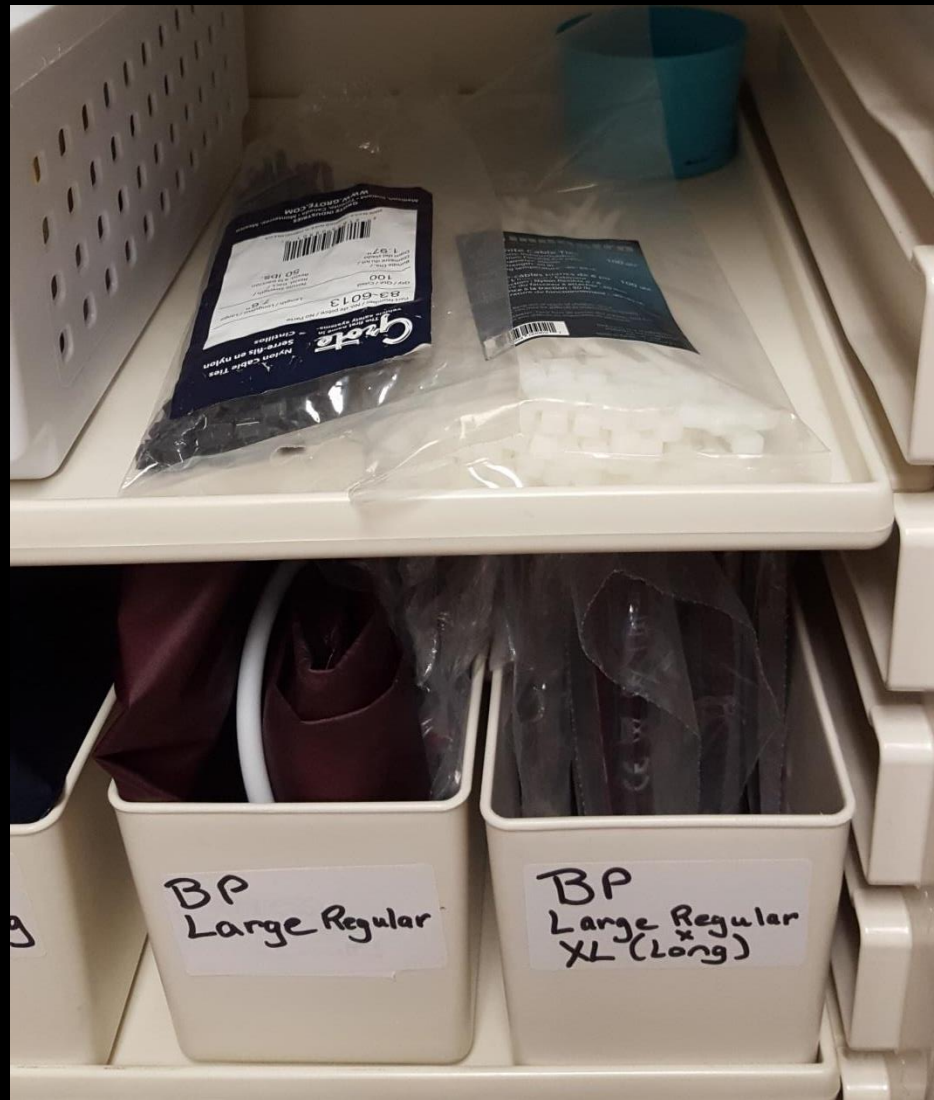
All supplies including the leads are in Box 2 (top)

After use, slide the rack in direction as close to the cleaners know to save the they clean the bedside.

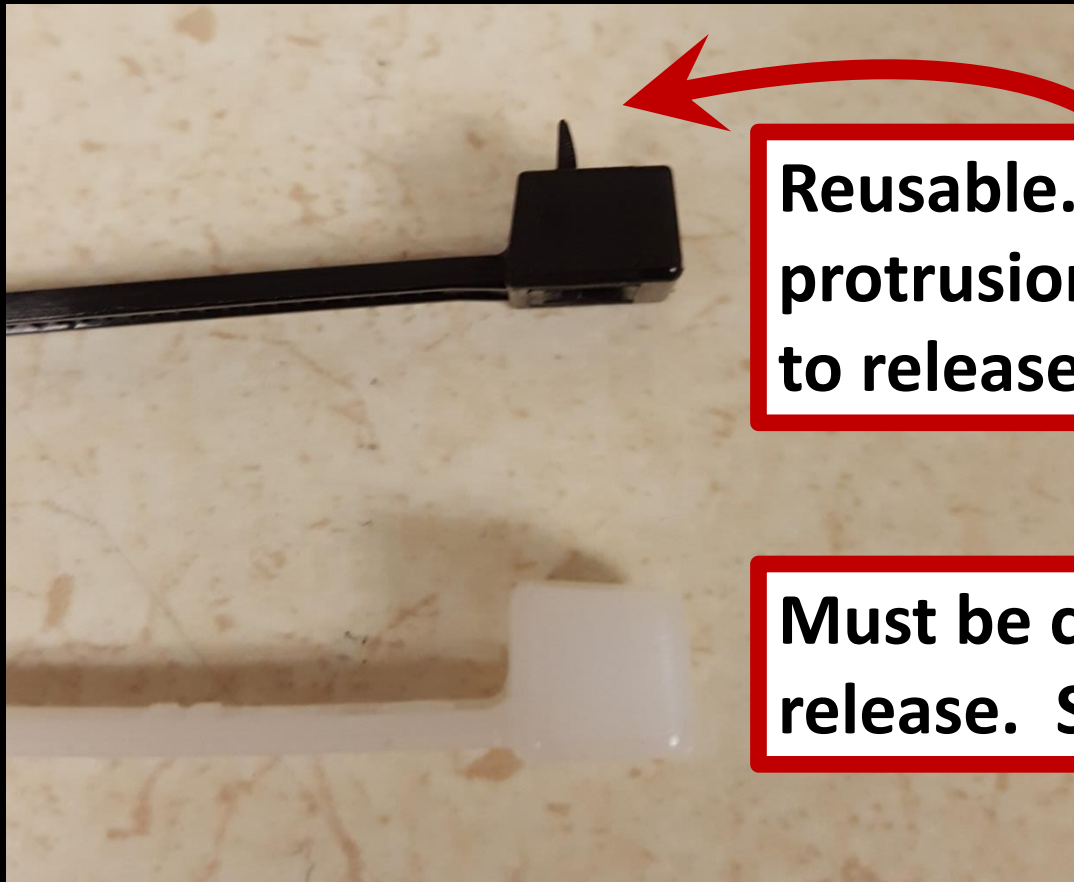
This will keep the leads being ordered so that when not in use.

BLANKETROL III
Blanket warmer

Extra Cable Ties are Located in the Nurse Server to Keep Cables Neat



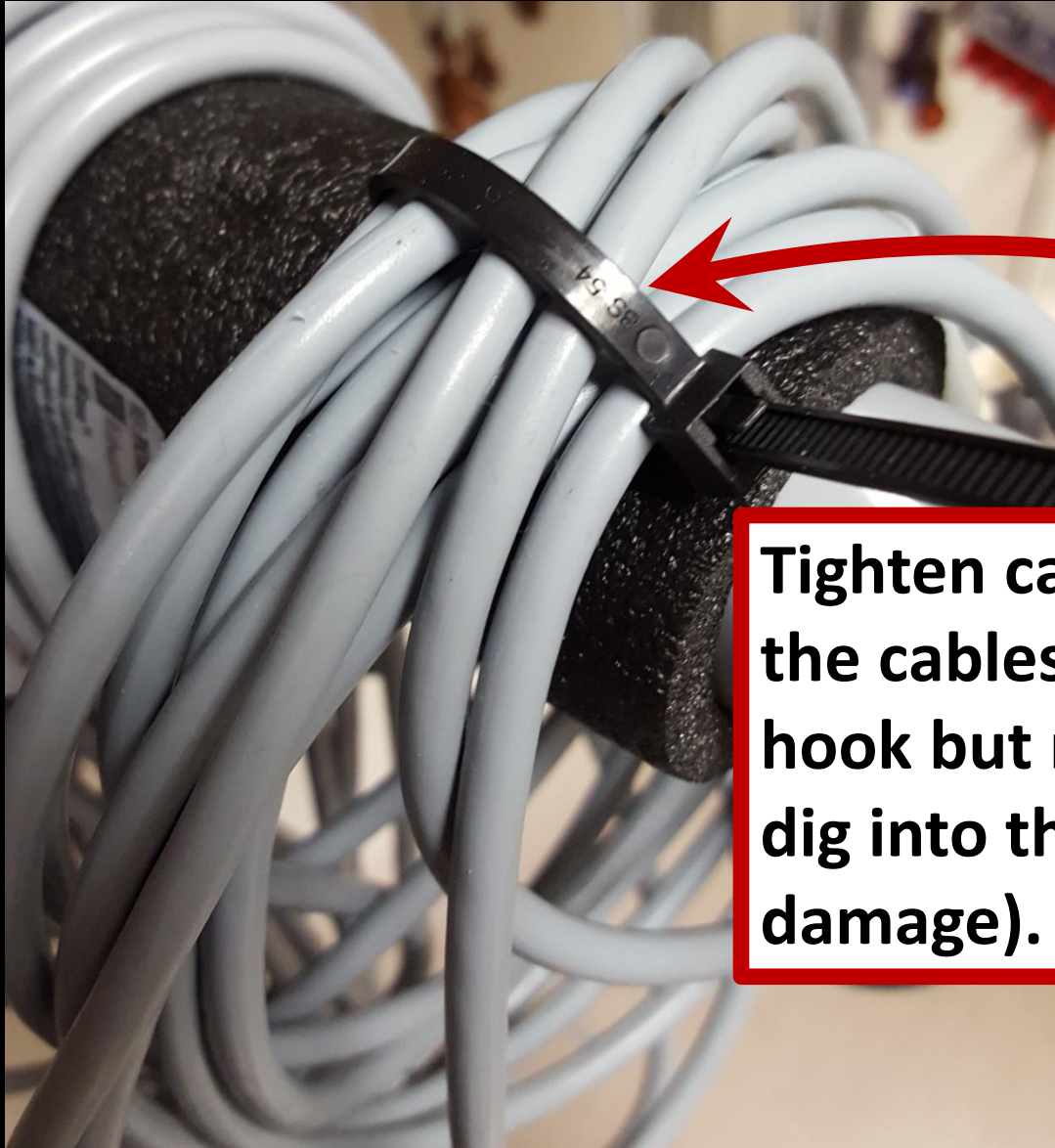
Some cable ties are single use (need to be cut) and some are multiuse)



Reusable. Note the small plastic protrusion that can be depressed to release the cable tie.

Must be cut to release. Single use.

Be Gentle!



Tighten cable ties enough to keep the cables from falling off the hook but not so tight that they dig into the cable (which causes damage).

Reusable Cable Ties



Press on the plastic “lip” with you nail to release cable tie.

Only store “low” items below the cable rack





EEG CABLES
←

BLANKET
WARMER

BLADDER
SCANNER



Location of EEG trunk cables and leads

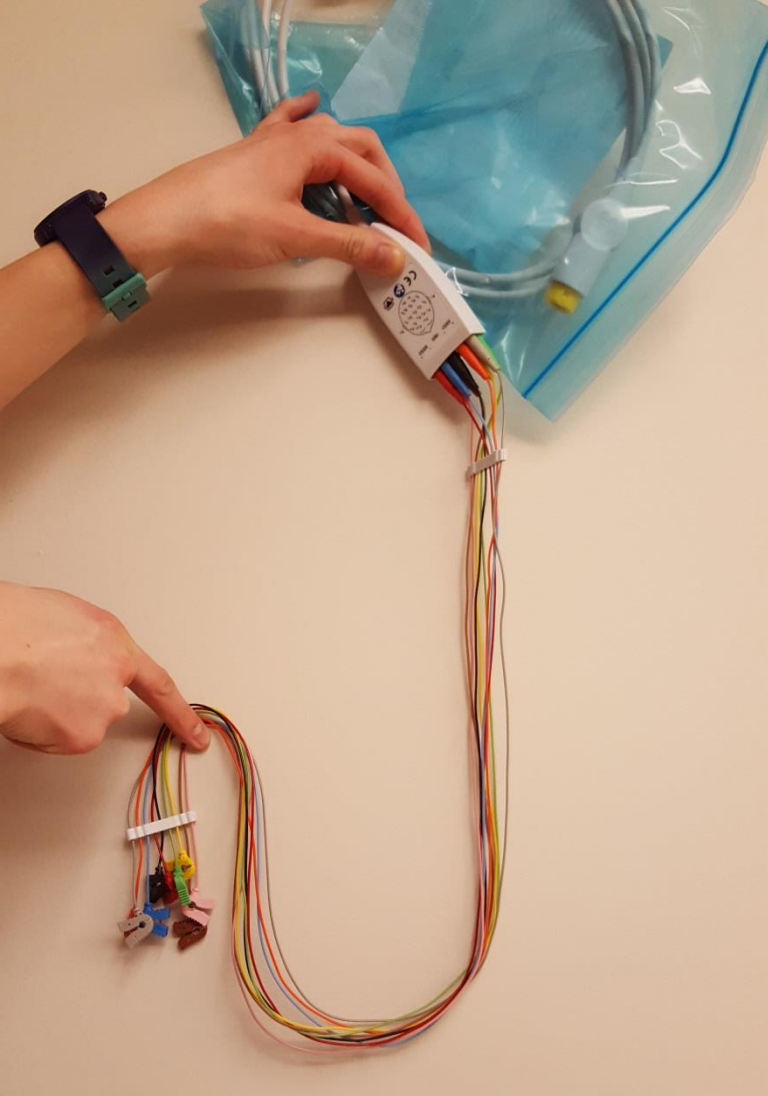


EEG CABLES



Loop the CEEG trunk cable around the larger hook and the CEEG leads around the lower hook.





Reminder to slide the two silicon stabilizer bars to the far end of each end of the CEEG leads whenever the leads are not connected to a patient.

This will prevent tangling. You don't want to have to untangle these!

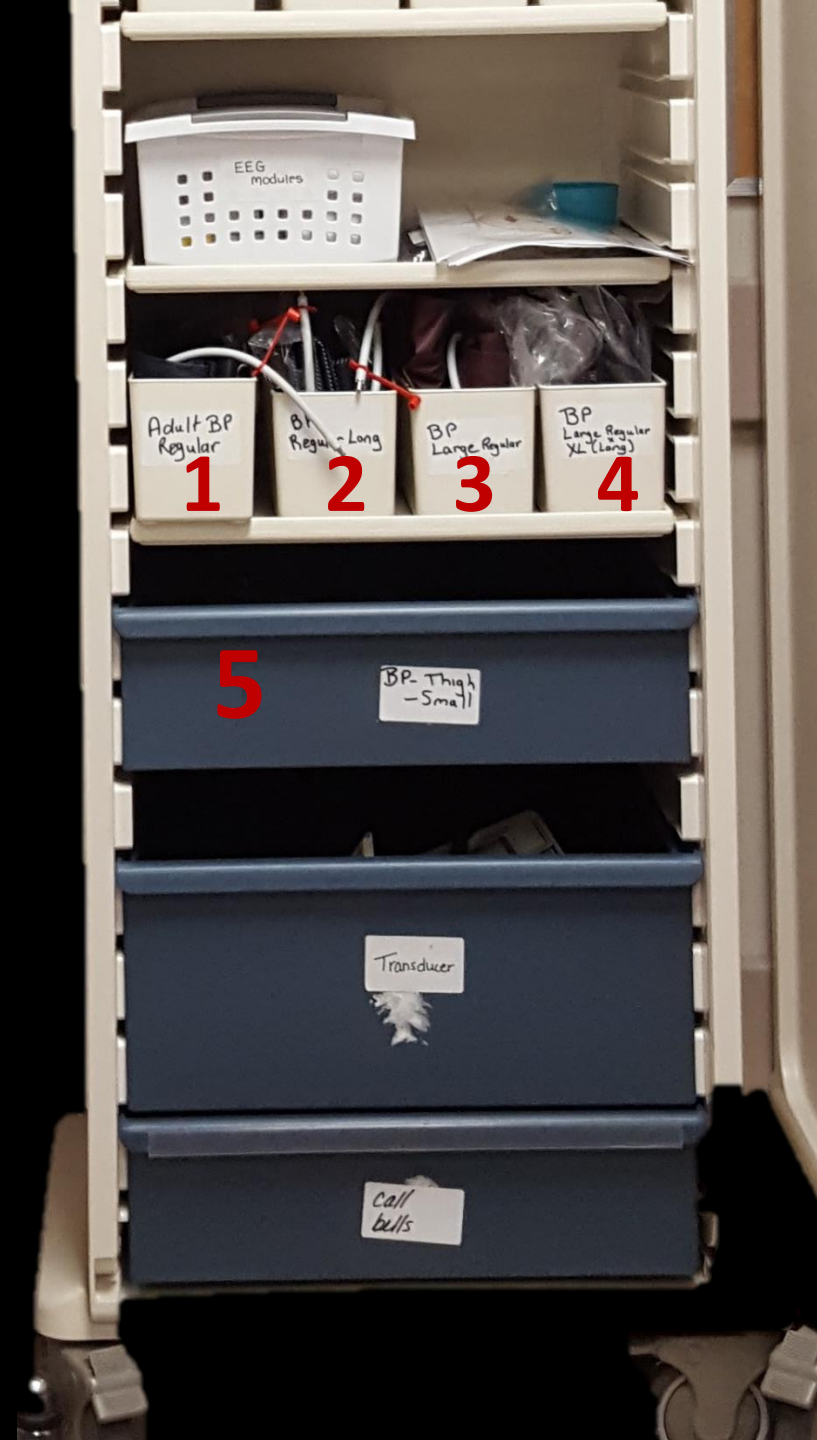
CEEG Module, Prep and Electrodes

Go to “What’s New”
and “Philips” to find
CEEG Setup Instruction



Blood Pressure BP *Sorted* by size:

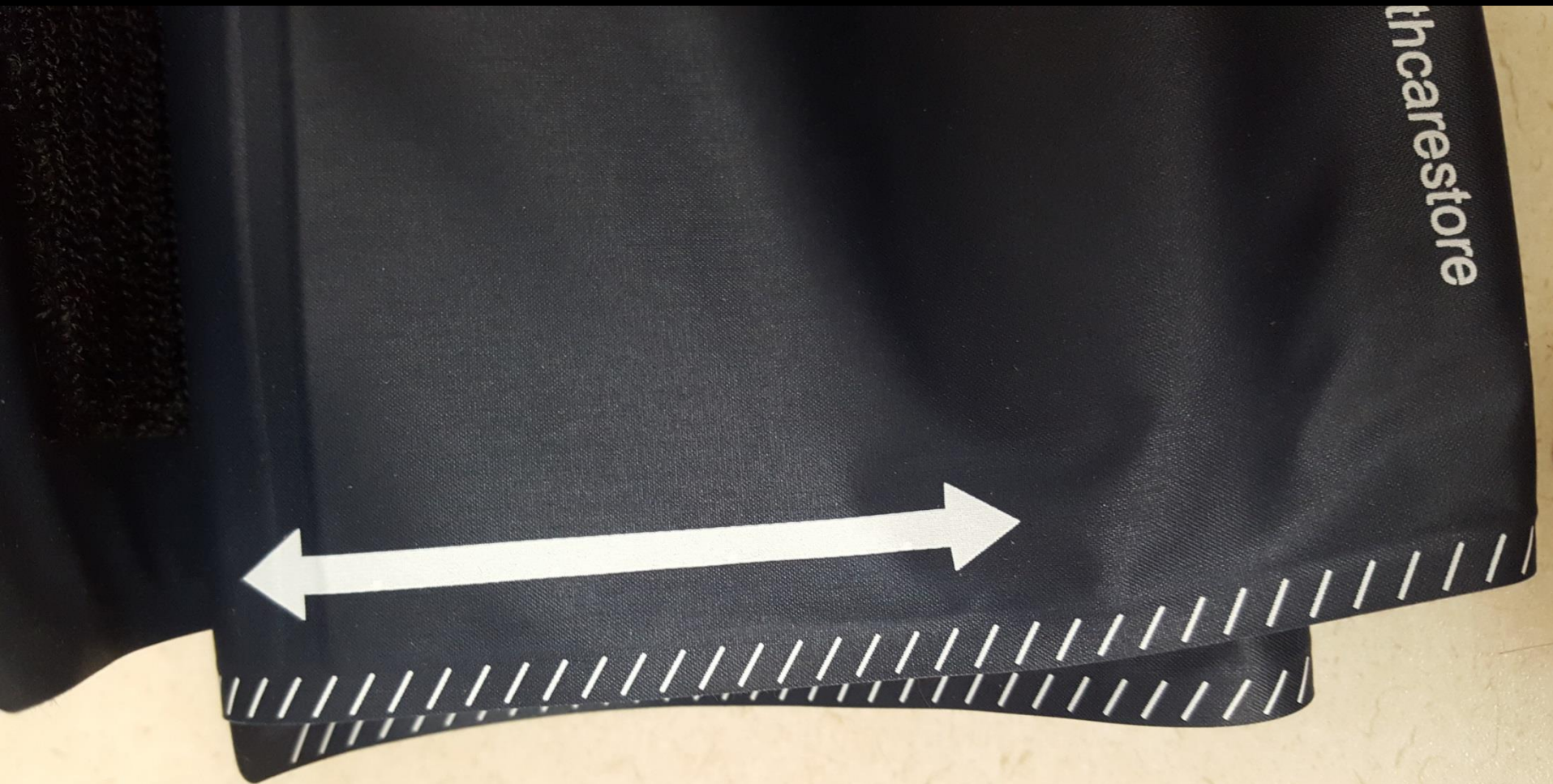
1. Adult (regular)
2. Adult Long (regular long)
3. Large
4. Large Extra Long
5. Thigh and small



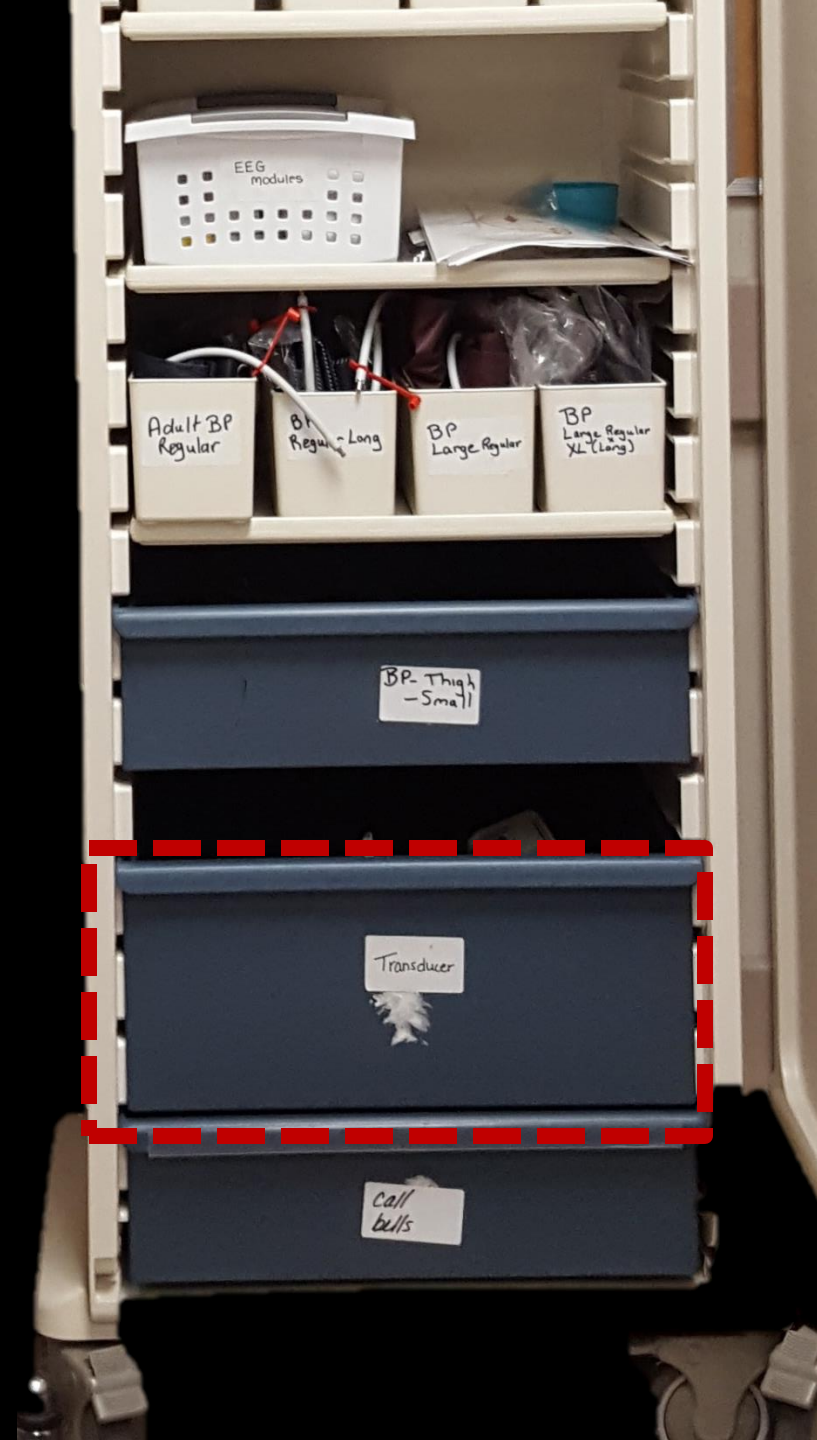
Extra pressure
modules and Cardiac
Output modules and
cables



White diagonal edge markings identifies the “Long” version cuffs



Transducer Mounts



Call Bells





NEW LOCATION FOR
PACEMAKER
GENERATORS!



Pressure Bags



Tycos



Gel Pads



Suction Regulators

North West
Corner for Fluid
Warmers/Rapid
Infusor and
Codman

Do not store IV
Poles in Bay 1
Equipment Room





Keep the area ahead of the “crime scene tape” free of clutter.

You should always be able to access equipment in an emergency without having to move IV poles and other equipment to get to what you need!

Philips temperature probe and trunk cable is locked in the Bay 1 Supply Room cupboard

