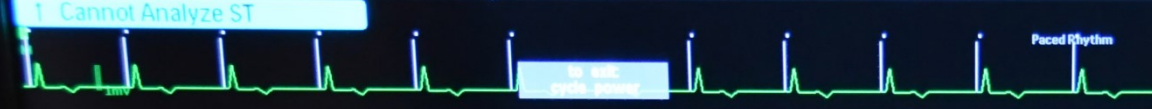


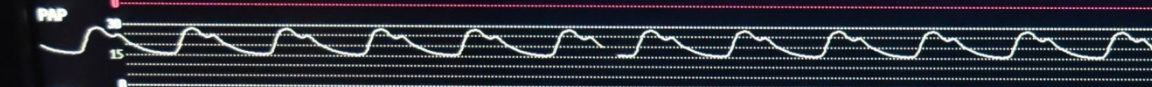
CSRU1 Not Admitted 24 Jan 2018 14:45 Adult EEG



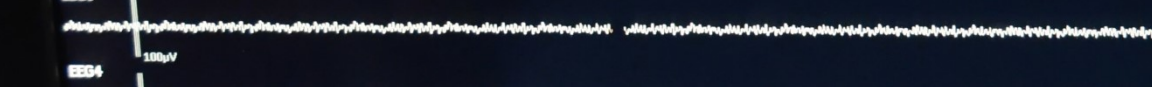
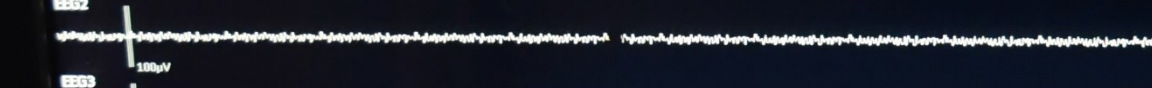
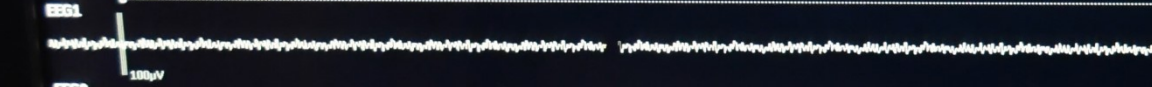
HR 110/50 60 Pulse 60
PVC 0
ST-I -? ST-aVR -?
ST-II -? ST-aVL -?
ST-III -? ST-aVF -?
CVP (9)



ART Sys. Mean 120/70 (91)
PAP Sys. 40
TP1 2.34
TP2 1.81
TP3 2.34
TP4 1.81



eCO2 40
ImCO2 0
awRR 20
RR 15



NDP Sys. 140
MDF2 22.0
PPF2 23.5
SEF3 24.0
MDF3 22.0
PPF3 23.5
SEF4 24.0
MDF4 22.0
PPF4 23.5
Delta1 2.5
Theta1 3.5
Alpha1 1.5
Beta1 92.5

SEF1 24.0
MDF1 22.0
PPF1 23.5
Delta3 2.5
Theta3 3.5
Alpha3 1.5
Beta3 92.5
Clock

14:45

Navigation bar with buttons: Silence, Pause Alarms, Start/Stop, NDP Modes, Stop All, Profiles, Patient Demogr., Vitals Trend, Alarm Limits, Change Screen, Monitor Standby, Main Setup, Main Screen.

UH CSRU

PHILIPS

BME LONDON
849587

REF: B63240
IN DE COMPLEXE
SPRINGER B63240

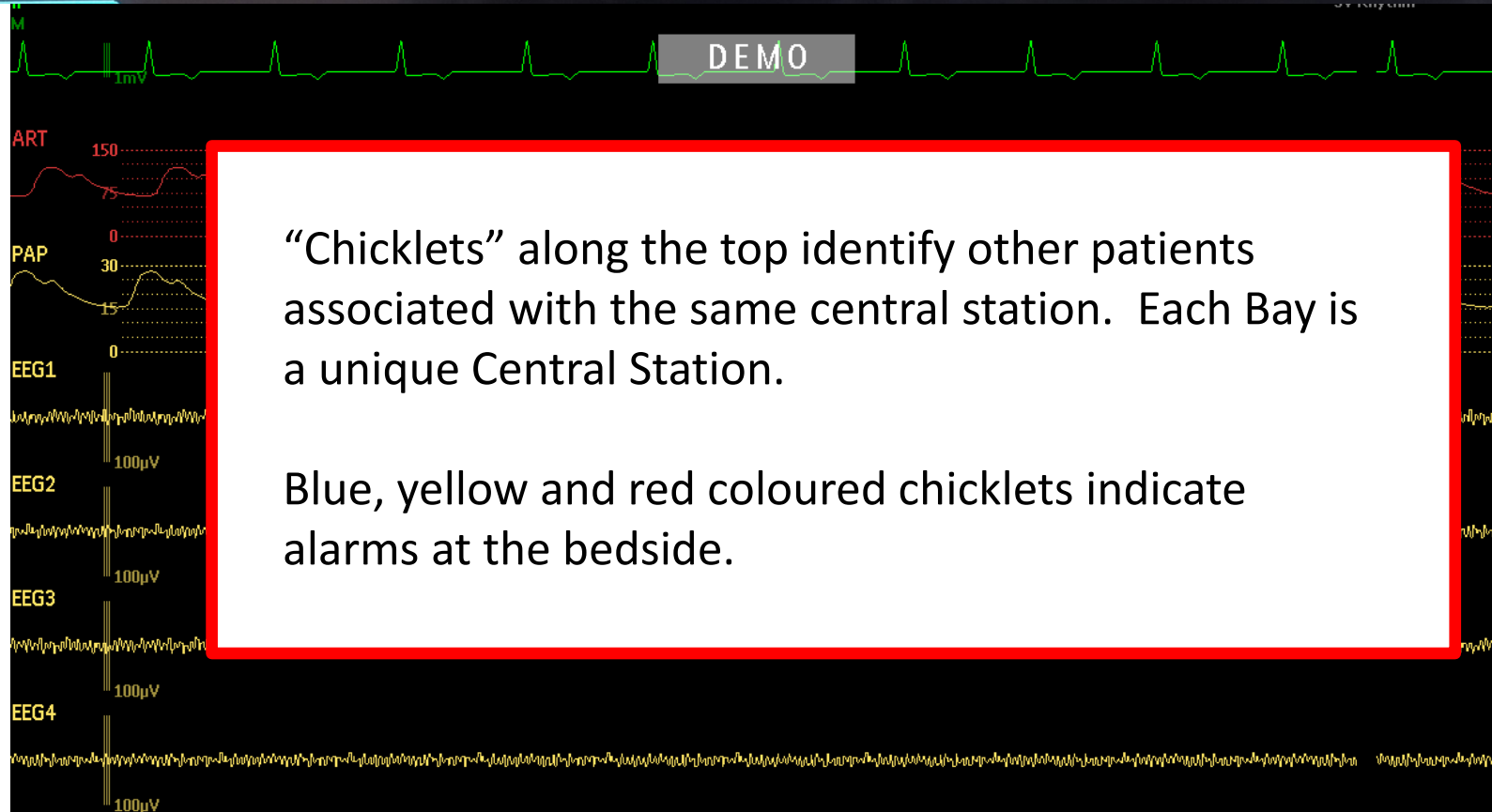
Navigating the Monitor

- The monitor is touch screen; it will work with double gloves
- It operates best if your finger is at a 90 degree angle to the screen; adjust the screen to eye level for optimal performance and ergonomics
- Prevent buildup of cleaning products or finger prints; after cleaning products have dried or after heavy use, the screen should be wiped with a cloth that has been *lightly* moistened with 70% alcohol
- To wipe the screen during patient use, press and hold the Main Screen until you hear a beep. To unlock the screen, repeat this function.



Navigation Principles

- If you want to do something, touch it
- To change a waveform, touch the wave
- To change a pressure or alarm limit, touch the value
- To learn more, hover over area



“Chicklets” along the top identify other patients associated with the same central station. Each Bay is a unique Central Station.

Blue, yellow and red coloured chicklets indicate alarms at the bedside.

HR 60

ART Sys. 120/70 (91)

PAP Sys. 28/15 (21)

TP1 2.34

TP2 1.81

TP3 2.34

TP4 1.81

ST-I 0.0 ST-aVR 0.0

ST-II -0.1 ST-aVL 0.0

ST-III -0.1 ST-V2 0.2

PVC 0

ICP Mean 10 (9)

etCO₂ 40

imCO₂ 0

awRR 20

RR 15

Delta1 2.5

Theta1 3.5

Alpha1 1.5

Beta1 92.5

Delta2 2.0

Theta2 3.0

Alpha2 2.0

Beta2 93.0

Clock 7:34

NBP Pulse 60 Man 07:33

Sys. 140

Mean 90

120/80 (90)

SEF1	24.0	SEF3	24.0
MDF1	22.0	MDF3	22.0
PPF1	23.5	PPF3	23.5
SEF2	24.0	SEF4	24.0
MDF2	22.0	MDF4	22.0
PPF2	23.5	PPF4	23.5

Jo, Blo

31 Jan 2018 9:33

Adult

Dynamic Waves

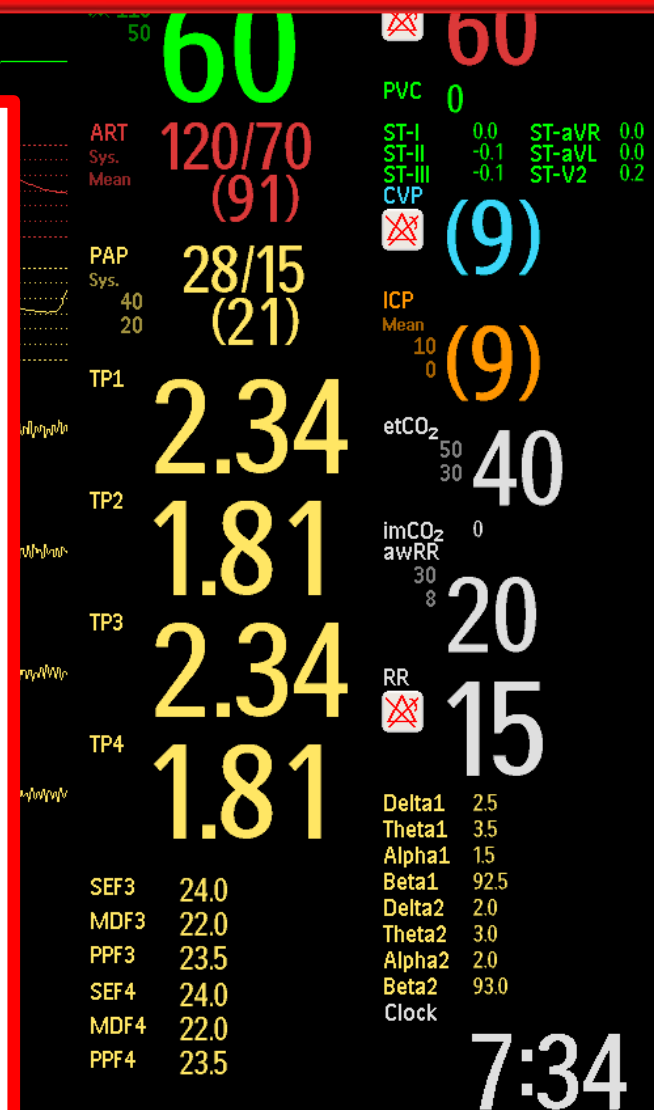
DEMO

Below the chicklets is the Patient Identification. You can touch this box to admit a patient or change any admission information (e.g., name, PIN, gender, date of birth or height/weight).

The “Adult” identifies the profile option. Adult is the default menu for all Adult Critical Care Patients (CCTC and MSCIU). To change the profile (to CSrU or Comfort Profiles), touch the box. The only difference between the Adult and CSrU profile is that the patient has the pacemaker “on”.

If you change the profile, any modifications you made to the original profile (e.g., alarm limits) will be lost and default settings will resume.

Dynamic waves is a screen option. Touch here to change the screen configuration (e.g., number of waves, EEG or 12 Lead ECG).



Silence

Pause Alarms

Start/Stop

NBP Modes

Stop All

Profiles

Patient Demogr.

Vitals Trend

Alarm Limits

Change Screen

Monitor Standby

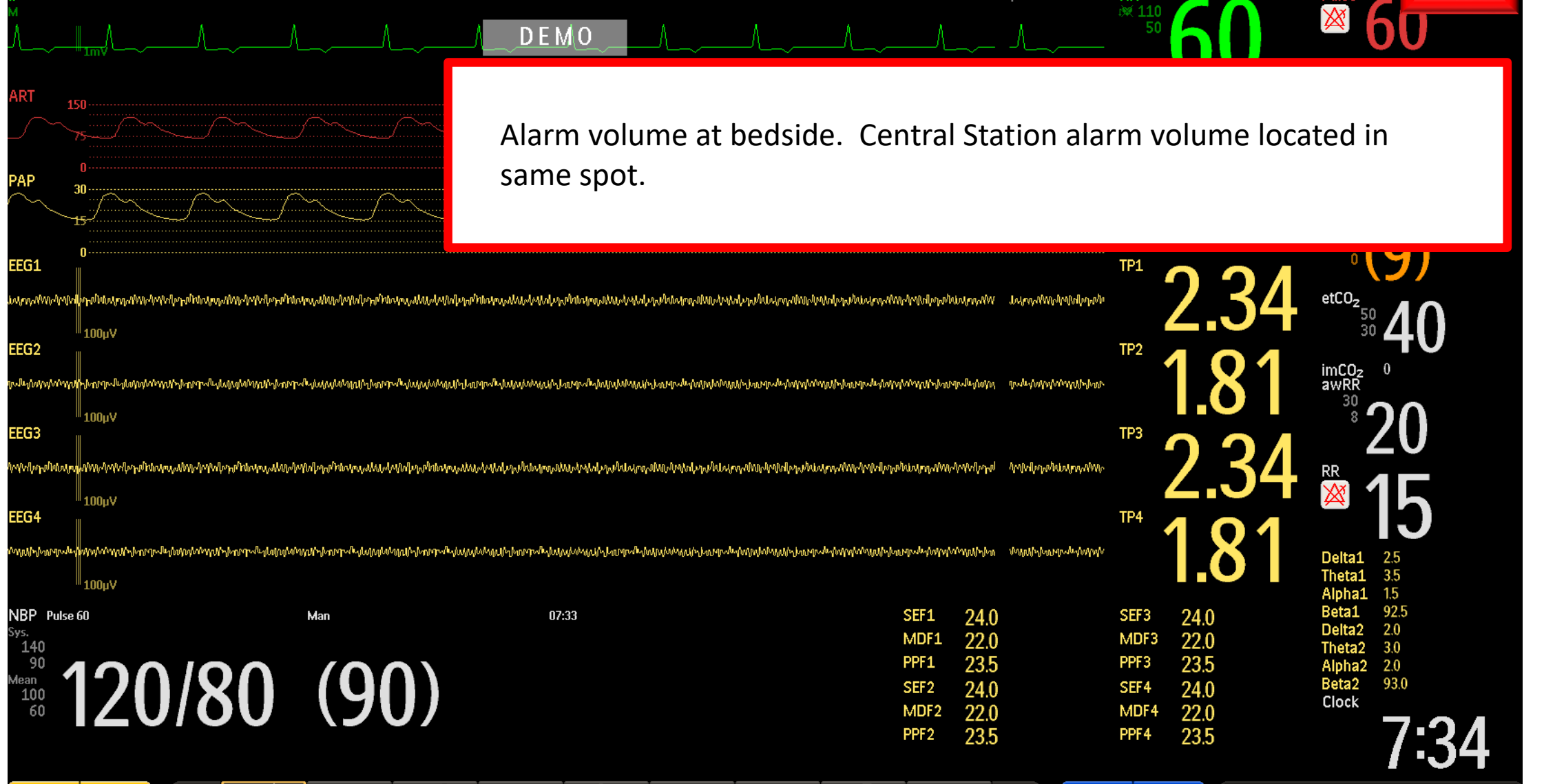
Main Setup

Main Screen

DEMO



Alarm volume at bedside. Central Station alarm volume located in same spot.



MONITOR COLORS

ECG

12 Lead

ECG

ST Analysis

QTC

Temp

RR

RR Wave

ETCO2 wave

ETCO2 value

awRR (airway RR)

Pleth

SpO2

ART(wave/pressure)

ABP(wave/pressure)

CVP(wave/pressure)

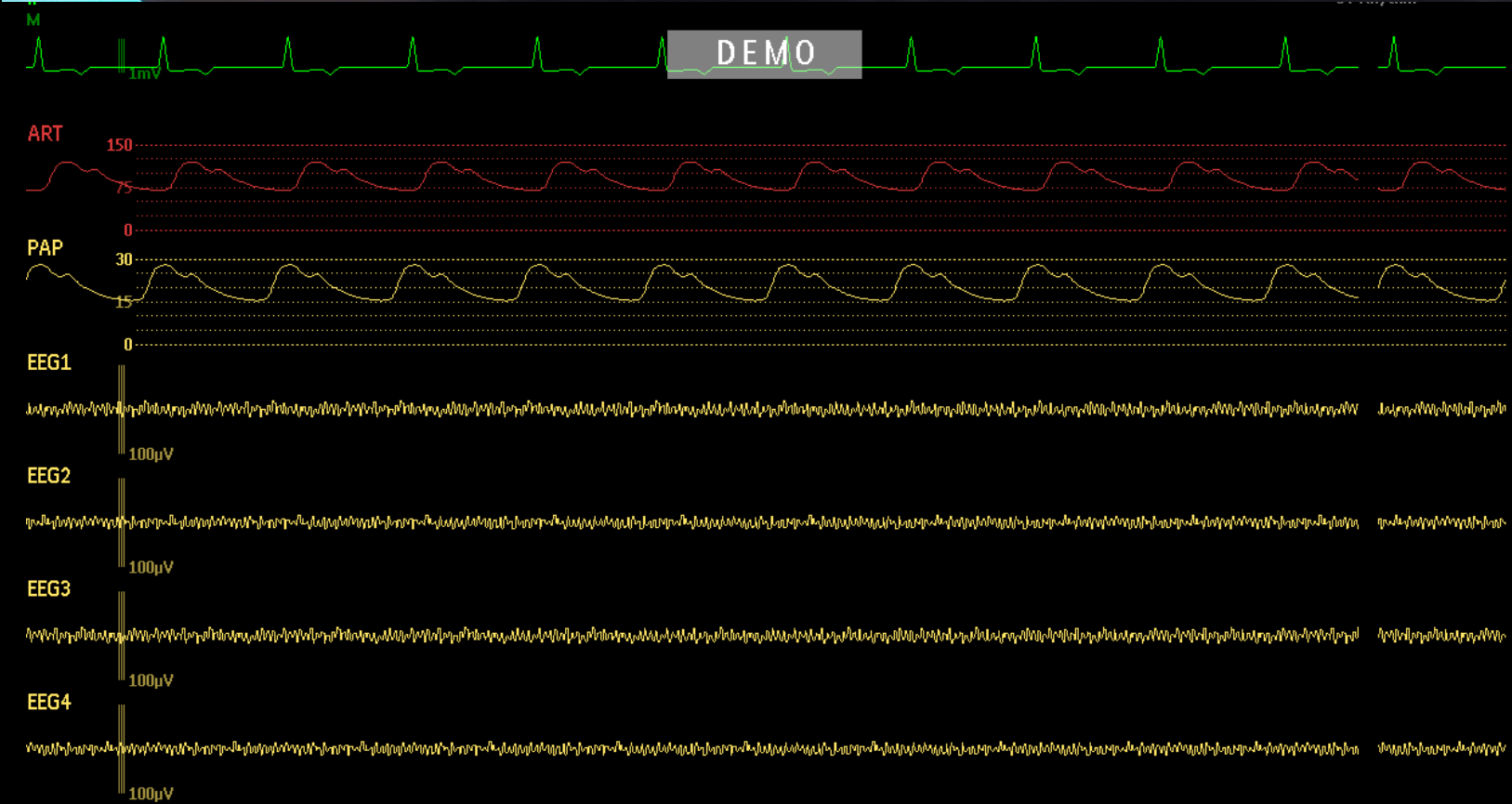
ICP(wave/pressure)

CEEG

CEEG values

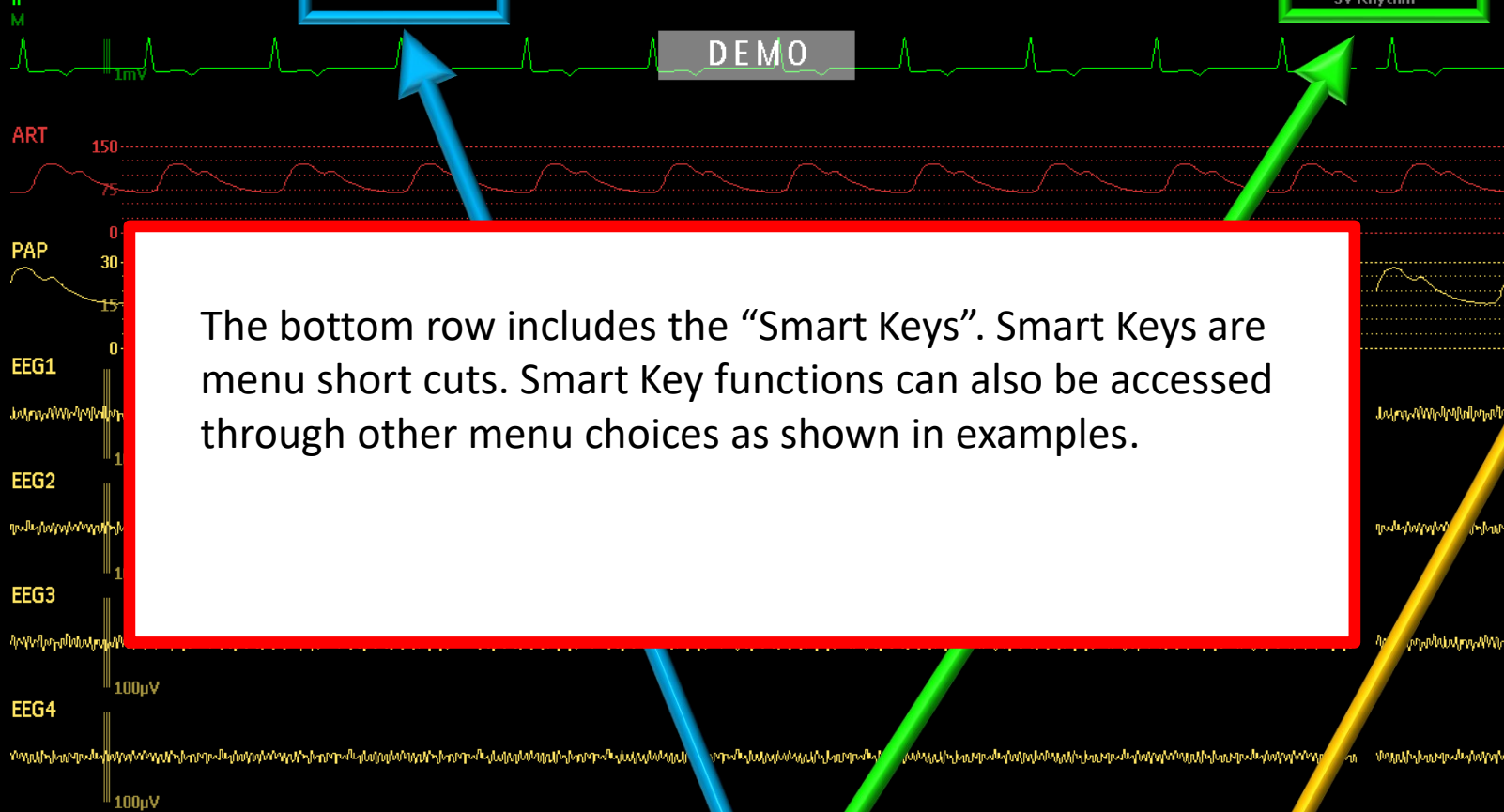
PAP waveform

PAP values



NBP Pulse 60 Man 07:33
 Sys. 140
 Mean 90
120/80 (90)

60
 ART 120/70 (91)
 PAP 28/15 (21)
 TP1 2.34
 TP2 1.81
 TP3 2.34
 TP4 1.81
 etCO₂ 40
 imCO₂ 0
 awRR 20
 RR 15
 Delta1 2.5
 Theta1 3.5
 Alpha1 1.5
 Beta1 92.5
 Delta2 2.0
 Theta2 3.0
 Alpha2 2.0
 Beta2 93.0
 Clock 7:34



60

ART Sys. Mean 120/70 (91)

PAP Sys. 28/15 (21)

2.34

TP2 1.81

TP3 2.34

TP4 1.81

60

PVC 0

ST-I 0.0 ST-aVR 0.0

ST-II -0.1 ST-aVL 0.0

ST-III -0.1 ST-V2 0.2

(9)

ICP Mean 10 (9)

etCO₂ 50 40

imCO₂ awRR 30 20

8 15

RR (9)

Delta1 2.5

Theta1 3.5

Alpha1 1.5

Beta1 92.5

Delta2 2.0

Theta2 3.0

Alpha2 2.0

Beta2 93.0

Clock

SEF1 24.0 SEF3 24.0

MDF1 22.0 MDF3 22.0

PPF1 23.5 PPF3 23.5

SEF2 24.0 SEF4 24.0

MDF2 22.0 MDF4 22.0

PPF2 23.5 PPF4 23.5

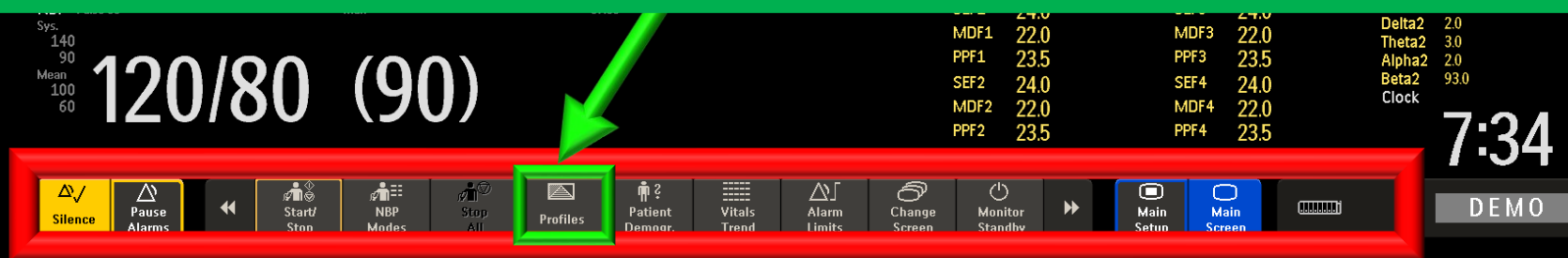
The bottom row includes the "Smart Keys". Smart Keys are menu short cuts. Smart Key functions can also be accessed through other menu choices as shown in examples.

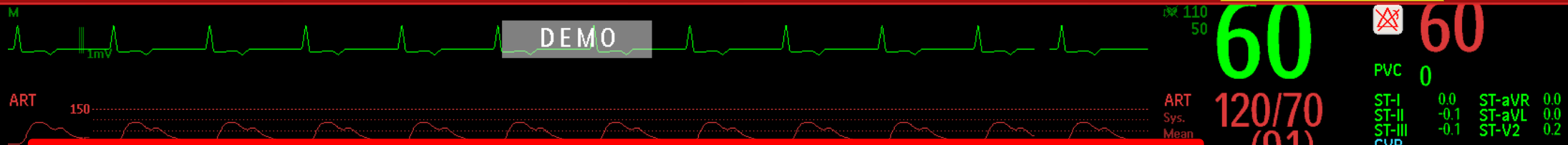


A **PROFILE** (green boxes) is default set of parameters that defines the colors, configuration and alarm limits for all measurements.

Choose Adult in CCTC. CSRU has the same default settings as Adult, except that pacemaker will “on”. To change the profile, **TOUCH THE CURRENT PROFILE (Adult)** and select your new option. You must confirm from the bottom of the page. If you change the profile, the monitor will revert back to the default alarms (any changes that were made to the alarm settings will be lost).

Change to **“Comfort Profile” for WLS.** This will disable all alarms. It will hide all waveforms and pressures (still visible on the central station). You need to confirm the change by selecting the prompts at the bottom of the screen.





A SCREEN defines how the waveforms and measurements will be displayed.

The middle section of the screen is where all measurements are displayed (waves and values). **The default SCREEN setup is "Dynamic Waves"**.

Each monitor can display up to 8 waves. The Dynamic Waves option will adjust the size of the waves to fill the screen. Choosing options such as 4 or 6 waves means that the wave has a fixed size.

60	60
120/70 (91)	PVC 0
28/15 (21)	ST-I 0.0 ST-aVR 0.0
2.34	ST-II -0.1 ST-aVL 0.0
1.81	ST-III -0.1 ST-V2 0.2
2.34	(9)
1.81	(9)
	ICP Mean 10 (9)
	etCO ₂ 50 30 40
	imCO ₂ 0
	awRR 30 8 20
	RR (X) 15
	Delta1 2.5
	Theta1 3.5
	Alpha1 1.5
	Beta1 92.5
	Delta2 2.0
	Theta2 3.0
	Alpha2 2.0
	Beta2 93.0
	Clock 7:34

NBP Pulse 60 Man 07:33

Sys. 140

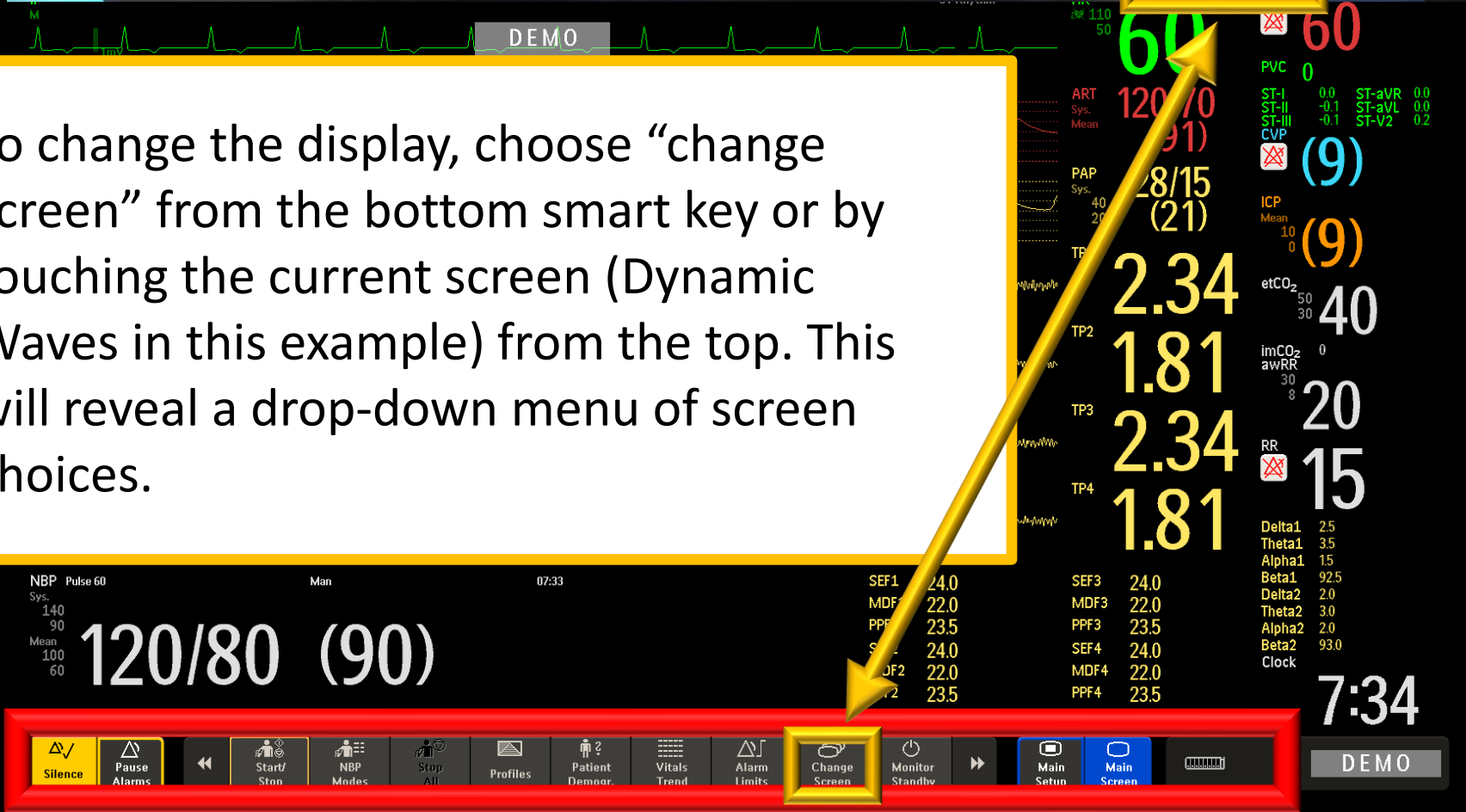
Mean 100

60

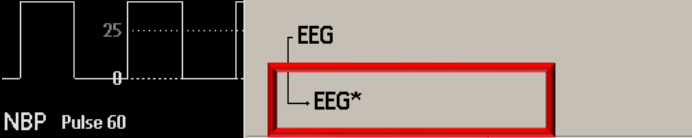
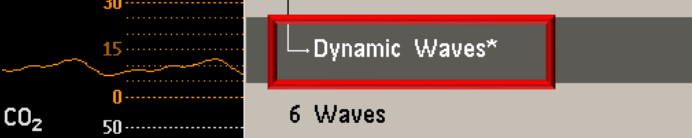
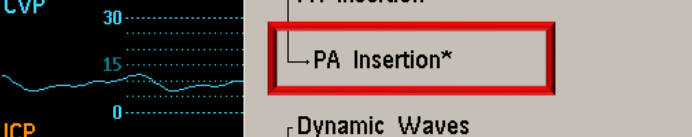
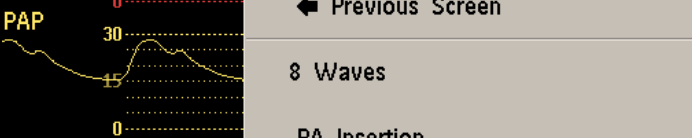
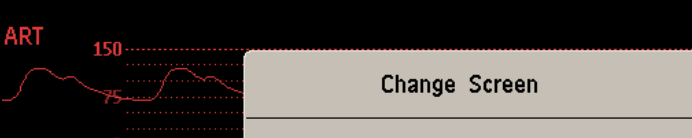
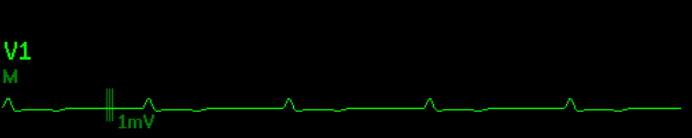
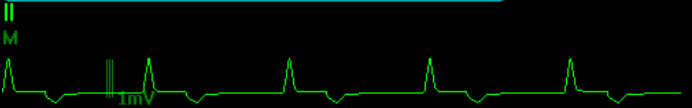
120/80 (90)

SEF1	24.0	SEF3	24.0
MDF1	22.0	MDF3	22.0
PPF1	23.5	PPF3	23.5
SEF2	24.0	SEF4	24.0
MDF2	22.0	MDF4	22.0
PPF2	23.5	PPF4	23.5

To change the display, choose “change screen” from the bottom smart key or by touching the current screen (Dynamic Waves in this example) from the top. This will reveal a drop-down menu of screen choices.



Unsupported LAN



DEMO

Temp 37.0
HR 60
PVC 0

ST-I 0.2 ST-aVR-0.9
ST-II 1.6 ST-aVL-0.6
ST-III 1.3 ST-V5 1.5

QT 480
QTc 480
ΔQTc 0

Pulse 60
Trect 37.0

awRR 20

Code

Clock 7:47

Change Screen

← Previous Screen

8 Waves

- PA Insertion
- PA Insertion*
- Dynamic Waves
- Dynamic Waves*

6 Waves

- EEG
- EEG*

You can modify any screen option. The modified version will appear below the default screen option with an *.

In this example, modified screen options have been created for PA insertion, Dynamic Waves and EEG. You can switch back and forth between the default and modified versions. Only the last modification will be saved (*).