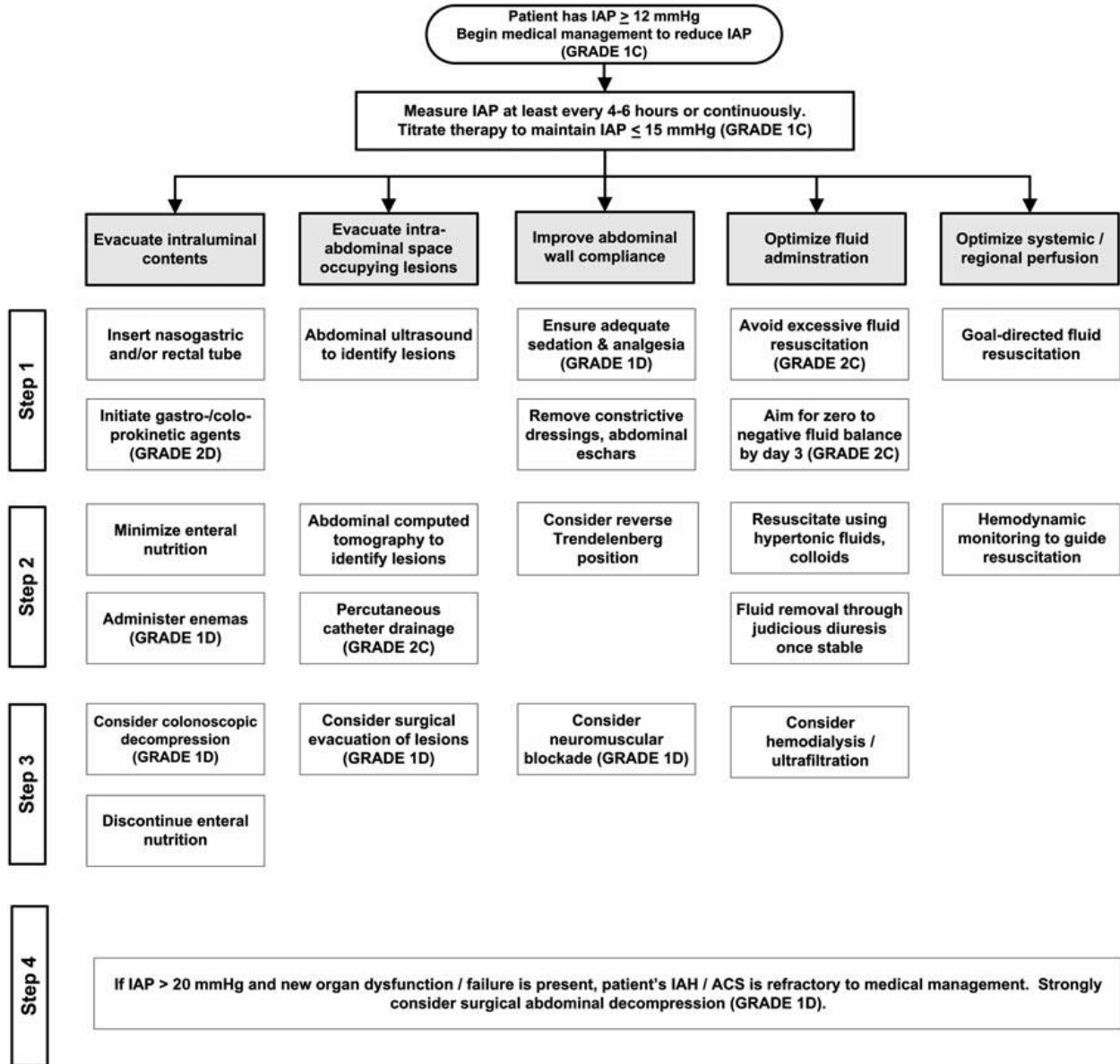


## IAH / ACS MEDICAL MANAGEMENT ALGORITHM

- The choice (and success) of the medical management strategies listed below is strongly related to both the etiology of the patient's IAH / ACS and the patient's clinical situation. The appropriateness of each intervention should always be considered prior to implementing these interventions in any individual patient.
- The interventions should be applied in a stepwise fashion until the patient's intra-abdominal pressure (IAP) decreases.
- If there is no response to a particular intervention, therapy should be escalated to the next step in the algorithm.



Decision-tree from:

Kirkpatrick, A. et al. (2013). Intra-abdominal hypertension and the abdominal compartment syndrome: updated consensus definitions and clinical practice guidelines from the World Society of the Abdominal Compartment Syndrome. *Intensive Care Med.* 39:1190-1206.