



Ecological Stewardship

NEWS

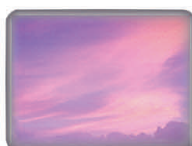
"understanding our impact... creating positive change"



London Health Sciences Centre

Issue 09

September, 2010



"We hope that you find something useful to take from Elements and something to give back"

This issue

Hot topics at LHSC

Engineering Services

EcoCare

Composting

Waste Audit

Shrink Wrap



EcoCare Conference 2010

The 3rd annual EcoCare conference planning is well under way for October 18th and 19th this year at the London Convention Centre.



EcoCare is the only conference in Canada to speak directly to the link between healthcare and the environment, and presents both practical and innovative ways to encourage and inspire ecological stewardship within the Canadian Healthcare Sector. EcoCare is geared toward celebrating positive ecological change within the Healthcare Sector and inspire delegates to continue to influence their organizations. EcoCare encourages thought and discussion on topics involving the link between environmental pollutants and human health, to reinforce the need for Healthcare Institutions to be leaders in ecological thinking and action.

The main focus of EcoCare is to educate delegates on ways and means to understand and reduce their ecological footprint. This will be done by using presentations on new technologies, keynote speakers, best practice case studies, and facilitated discussions.



Our target audience includes, but is not limited to: Engineering Services Leaders, Healthcare Professionals, Purchasers, Senior Level Hospital Executives, Environmental Services Leaders, and Support Services.

Please visit the EcoCare website at www.ecocarecanada.ca for more details on this years conference, as well as information on our last two conferences.

Sign up today! Help to create positive change and inspire others to do the same. LHSC employees receive a 25% discount on registration fees!



Composting Pilot Project at University Hospital

After completing LHSC's first ever waste audit last year (July, 2009), it became apparent that organic material in our waste stream has been significantly contributing to the overall waste that is sent to landfill. Food scraps and organic materials contribute approximately one quarter (25%) of the total waste, on average, sent to landfill.

These results prompted discussion on how we can incorporate a composting program at LHSC to divert approximately 25% of our waste from the landfill, to be used for more environmentally friendly purposes. Starting in the next couple months, a composting pilot project will commence at the University Hospital site, in the third floor cafeteria kitchen.

Once the pilot project is complete and reviewed, the plan is to move to hospital wide organics composting. This would help to divert approximately 1.2 M lbs of organic waste from the landfill, per year from LHSC. Composting not only helps with reducing the amount of waste going to landfill, but also produces rich compost material full of nutrients, and can be applied to lawns and gardens.

Composting can be done at home as well, and is very easy to set up. You will be surprised at how many different items you throw away in your trash, that could be composted and provide you with nutrient rich soil (or Humus) that can be applied to your lawn or garden. Please have a look at this website for tips and tricks for setting up composting at home.

<http://www.greenpeace.org/usa/en/news-and-blogs/news/green-living-guide/composting/>

It's easy, it pays off, and you will reduce your ecological footprint significantly!



Waste Audit 2010

As per the Ministry of the Environment regulations, it is necessary for public hospitals to submit Waste Audit Results and Waste Reduction Work Plans as required by Ontario Regulation 102/94. This regulation states that, *“The operator must conduct a waste audit covering the waste generated by the operation of the hospital, and prepare and implement a waste reduction work plan. The owner is also required to update the waste audit and its written report and the waste reduction work plan on an annual basis”*



As such, a waste audit and waste reduction work plan must be completed on an annual basis for all three LHSC main sites (Victoria Hospital, University Hospital and South Street Hospital). The waste audit was conducted June 7-11, 2010 with the significant help from housekeeping staff and leaders, as well as PSA staff and leaders. The ecological stewardship team appreciates everyone’s help in complying with the Ministry’s regulation.

Random samples of **general waste** were collected, as collection of every bag of garbage from each site would be excessive. The general waste was collected based on six different types of areas that exist within the hospitals, and are the main sources for general waste: Exam Rooms and Clinics, Patient Areas, Staff Areas, Kitchens/Cafeterias/Tim Hortons, Specialty Medical Areas, and Maintenance/Mechanical Areas.

The waste audit helps us to identify areas that we may improve on with recycling and waste disposal, and highlights areas that we are excelling in at LHSC.

Shrink Wrap Is Now Recyclable

Have you ever wondered what happens to all the plastic material that is wrapped around shipping pallets to secure individual containers together? Until now, that shrink wrap was going to landfill.

The Shipping/Receiving departments at each of the docks at LHSC are now collecting shrink wrap for recycling. Special collection containers have been placed at each dock for this purpose.

Shrink wrap is commonly made of linear low density polyethylene, or LLDPE that can be recycled back into new shrink wrap or other plastic products.

In an effort to reduce the amount of waste that is sent to landfill from LHSC, the ecological stewardship team encourages everyone to help make environmentally conscious decisions when throwing away waste.

The ecological stewardship team appreciates all the support and effort that is made across the hospital in order to help make LHSC a more sustainable organization!

Thank You!

Standing beside the shrink wrap collection container are Joe Matus, Coordinator Supply Chain Management and Peggy Frew, Environmental Stewardship Specialist

