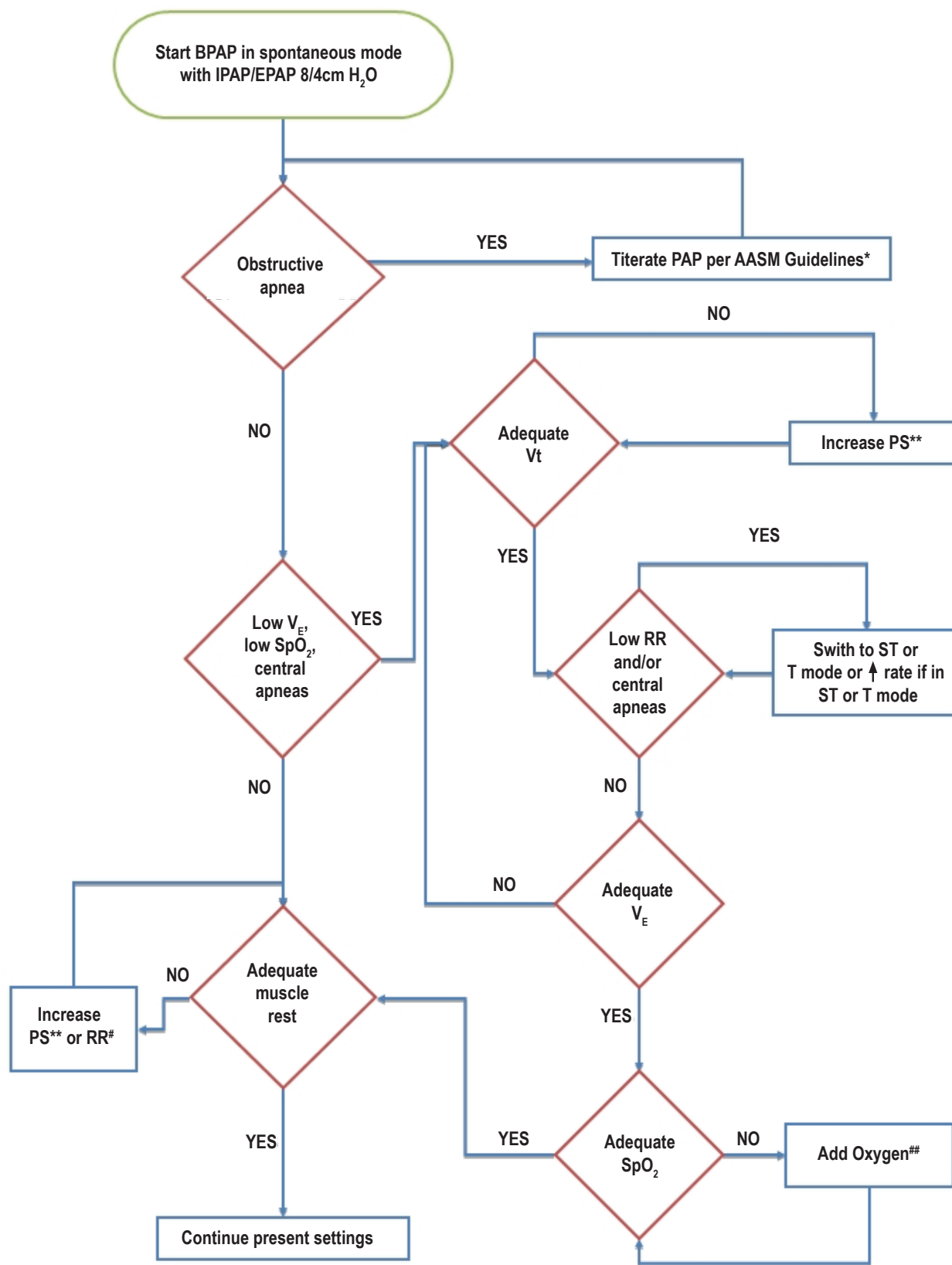


Figure 3—Schematic of NPPV titration protocol



RR refers to respiratory rate; Vt, tidal volume; V<sub>E</sub>, minute ventilation; SpO<sub>2</sub>, oxyhemoglobin saturation by pulse oximetry; PAP, positive airway pressure; PS, pressure difference between EPAP and IPAP; ST, spontaneous timed mode; T, timed mode. \*refer to section 1.4 and reference 48; \*\*Increase PS 1-2 cm H<sub>2</sub>O every 5 minutes (section 4.4); #Add NPPV initiated breaths at 1-2 breaths per minute below the NPPV naïve rate or increase RR 1-2 every 10 minutes (section 4.5); ##Add oxygen at 1 L/min or increase by 1 L/min every 5 minutes (section 4.7).